



ATSS Foundation Sporting Clays Event FAQs

Facility Information:

American Shooting Centers

16500 Westheimer Pkwy.

Houston, TX 77082

Event begins at 10:00 a.m. (CST)

Participants should be checked in by 8:15 a.m. (CST) to participate in the Flurry competition

What is included?

Shooter registration includes bus transportation, eye and ear protection, 74 targets, shells, rental guns (if needed), safety briefing, a new flurry competition, breakfast, lunch, snacks, beverages, and friendly competition.

Schedule of Events

8:15 AM – Buses arrive at course

8:15-9:45 AM – Breakfast served

8:15-9:40 AM – Flurry competition

9:40-9:45 AM – Welcome remarks, safety briefing, and rules overview

9:45-9:55 AM – Shooter's report to carts and report to assigned station

10:00 AM – Event begins

12:30 PM – lunch and awards ceremony

2:00 PM – Buses depart back to hotels

Do I need to bring anything?

1. We encourage you to bring your own 12-gauge or 20-gauge shotgun to participate in the event. However, a limited number of rental guns will be available for squad members to share.
2. Close-toed shoes or boots are recommended for your safety.
3. Eye protection (safety glasses) and ear protection (squishy plugs) will be provided. You may choose to bring your own sunglasses or eye protection, and ear protection.

What is sporting clays?

Think of sporting clays like golf with a shotgun. No two courses are the same and each station presents different targets. Sporting clays are designed to simulate field shooting and mimic the flight path of gamebirds (flushing, crossing, incoming), as well as rabbits running across the ground. You will move from station to station where new target presentations are thrown in pairs (usually 3 pairs per station).

Do I need experience?

No, you do not need experience! Even if you have not held a firearm, range officials will provide you with a quick training session and safety briefing preceding the event.

How many targets will be thrown?

Participants will shoot 74 clay targets.

How long does it take to complete the course?

There are two courses. Both have 10 stations. You can expect to spend three to four hours on the course depending on the number of clays thrown, the size of your squad, and the total number of participants.

Will golf carts be available or is it a walking course?

Each squad of four will share a golf cart. The course is walkable.

Do I need to sign any release forms?

Yes, all participants are required to review and sign the [Foundation release of liability form](#). Participants will need to sign the facility release of liability form when they check in onsite.

What are the Rules of the Range?

See [range safety rules](#) for full details.

How is the event scored?

The Lewis Class scoring system is a clever way to level the playing field in sporting clays competitions. It allows shooters of all skill levels to have a shot at winning, regardless of whether they're top-tier or just starting out. Here's how it works:

Lewis Class scoring is a handicap-style system that divides shooters into groups (or "classes") based on their final scores after the event is completed—not beforehand. This means:

- You don't compete only against the best shooters.
- You're grouped with others who shot similarly to you.
- You have a fair chance to win prizes even if you're not the top scorer.

How It Works:

- Scores are listed from highest to lowest after all shooting is done.
- Shooters are divided into 4 classes based on score percentile.
 - Example: 100 shooters and 4 classes → 25 shooters per class.
 - Class A: Top 25% Class B: Next 25% Class C: Next 25% Class D: Bottom 25%
- Top score in each class wins that class.
- Ties are handled by tie breaker station scores.

What is Transportation Security Administration's (TSA) Firearm Transportation Policy?

You may transport unloaded firearms in a locked hard-sided container as checked baggage only. Declare the firearm to the airline when checking your bag at the ticket counter. The container must completely secure the firearm from being accessed. Locked cases that can be easily opened are not permitted. Be aware that the container the firearm was in when purchased may not adequately secure the firearm when it is transported in checked baggage. Many cases will accommodate two shotguns, TSA will allow you to travel with two shotguns in one case.

If you are traveling internationally with a firearm in checked baggage, please check the U.S. Customs and Border Protection website for information and requirements prior to travel.

See [TSA's Transporting Firearms Policy](#) for more details.

What should I expect at the airport?

After you declare the firearm to the airline when checking your bag at the ticket counter, a TSA agent will ask you to remove the locks and will inspect the contents. Sometimes, they will ask you to take additional steps, such as an x-ray process.

Once you arrive at your destination, your gun case may appear on the baggage carousel. However, it is more likely to appear in the oversized baggage area or the baggage claim office itself for security purposes.

Where can I buy a TSA approved hard-side container to transport my shotgun(s)?

You should transport your firearm in a TSA approved firearm transport container that meets TSA guidelines and regulations. You should choose a hard-sided container that has multiple locking points (cannot be accessed), durable, protective, and impact-resistant. Soft-sided cases are not TSA approved. Cases with a single locking point can still be opened and accessed and are not TSA approved.

Here are a few options for your consideration:

- www.harborfreight.com/9800-weatherproof-protective-rifle-case-long-tan-56862.html
- www.pelican.com/us/en/product/cases/long-case/protector/1750?sku=017500-0000-110
- www.cabelas.com/shop/en/cabelas-armor-xtreme-lite-double-long-gun-case

What are the convention's hotel policies regarding firearms?

See [ATSSA's Convention & Traffic Expo housing firearm policies](#) for details. Please review the hotel policy before booking your housing for the convention.

What do the Challenge Coin packages include?

Participants can purchase commemorative Challenge Coins which are uniquely numbered. The number allows you to participate in events and games. The package deal includes a commemorative challenge coin, one entry into the prize drawing for an opportunity to win one of fifteen \$100 gift cards, and two squares on the pattern board game to win one of two \$250 gift cards. See [Games and Prizes](#) for more details.

What's New This Year:

4-Person Flurry

Shooter registration fee includes a chance for squads to participate in a [4-person flurry competition](#), where shooters will shoot 40 targets in over 1 minute. This special event will be held in the morning before the Sporting clays event begins. Shooters must be checked in by 8:15 a.m. to participate. The facility will provide rental guns for this special event.

Facilities:

Breakfast and lunch will be served outdoors under a pavilion area with tables and chairs. Restrooms and porta-potties are located near the pavilion. Porta-potties are located on the range.

Dress Code:

Dress for the weather. Wear close-toed shoes or boots for hiking terrain. Eye and ear protection must be worn (provided to you).

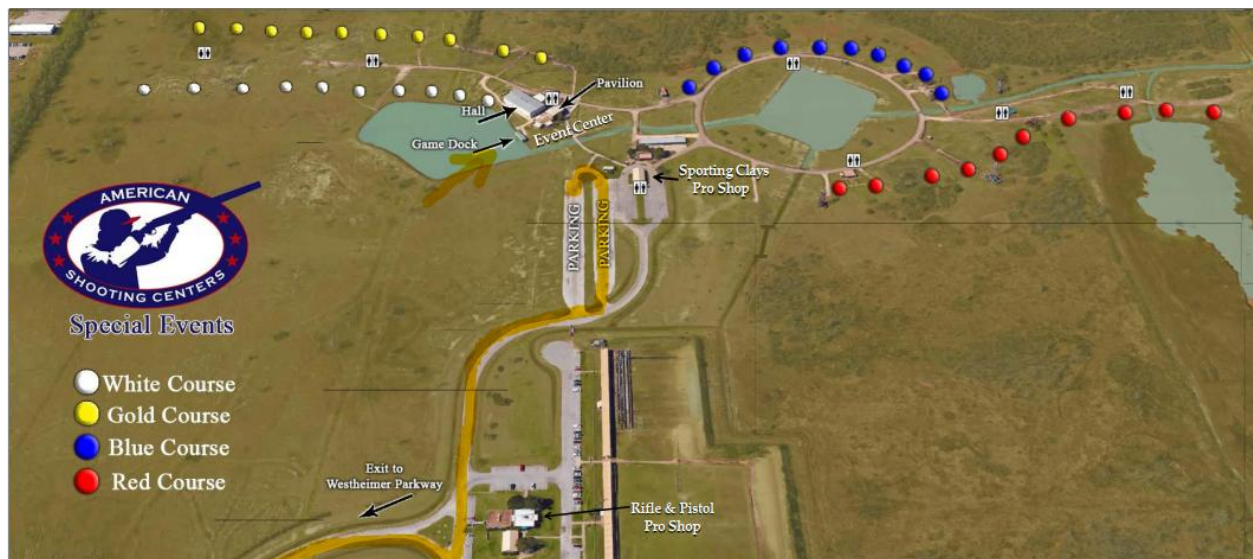
Can I volunteer?

Yes, our event relies on volunteers to help with everything from registration check-in, giveaways, challenge coin tables to the pattern board game and setting up for the awards ceremony. You can still volunteer even if you are participating in the event. If you're interested, complete the [Volunteer Sign Up Form](#).

What is the alcohol policy?

Absolutely NO ALCOHOL on clay courses at any time. Wristbands must be worn while on the course or shooting. Only after all main event shooting is completed, and within the event pavilion can alcohol be consumed. Two uniformed officers will be present. The officers, Shootmaster, or RSO will deny range access to anyone whom they have observed violating this rule or whose behavior indicates they may be in violation.

Facility Map:



Safety

All participants are expected to attend a safety briefing before the event begins. Eye and ear protection must be worn. A firearm can only be loaded when you are in the station, the firearm is over the front rail and the target area is deemed clear and safe. At all times, the firearm shall be unloaded and placed on a rack or carried vertically with the action open.

When leaving any station or path area, participants must ensure that the firearm is unloaded, and the action is open and carried in a vertical position.

All mounts must be taken from inside a station by one person at a time. Mounting from anywhere else, including next to or in front of a station is strictly prohibited.

No practice mounts or swings are allowed except while in the station and the gun pointed downrange.

Any infraction of these rules will result in the loss of privileges and possible expulsion from the property, without a refund.

I have additional questions, who should I contact?

Contact ATSS Foundation staff by phone 540-368-1701 or by email foundation@atssa.com.